

46 Chinook

*Windy*



Spirit of Scandinavia recognized worldwide

Windy  
46 Chinook

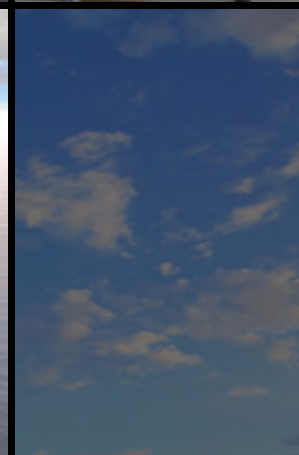
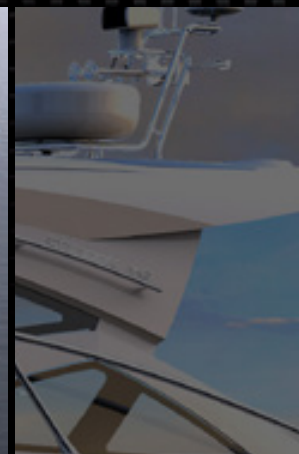




Windy

chryslers vs





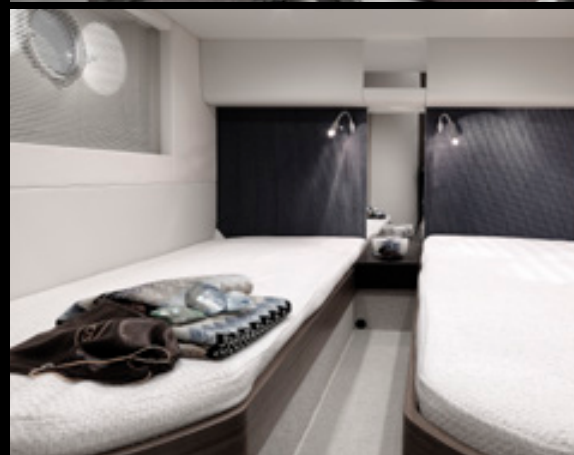
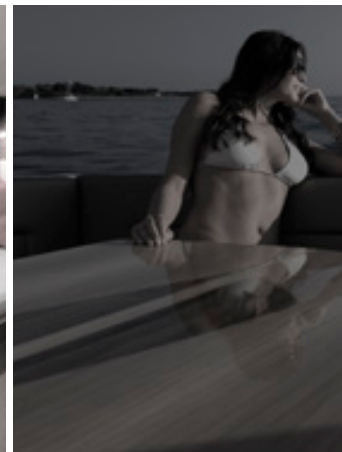


















Hull & Superstructure

Modified deep V mono hedron hull construction  
Lightweight PVC foam girder stiffening system  
PVC foam sandwich construction in hull, superstructure and deck  
Advanced Multiaxial fibreglass mats.  
Vinylester vacuum infused  
Powderbound CSM for protection against osmosis.

Deck Fittings & Equipment

All fittings crafted and cast from highest grade stainless steel  
Stainless deck cleats x8  
Pulpit and rails in stainless steel  
Stainless bow roller and anchor stop  
Stainless Bruce anchor (20 kg), 50 m chain  
Reversible anchor winch 700W, operated from deck or helm  
Chain lockers - fender stowage  
Starboard fresh water filler (1)  
Holding tank w/ electric pump  
Decksides discharge-point for holding tank  
Flag pole and ensign socket  
Signal horn  
Navigation lights  
Down lights on aft deck

Cockpit Saloon

Hard Top in GRP with large electrically operated canvas sunroof  
Self-draining cockpit  
Manually operated side window on starboard side  
Main AC/ DC control panel  
Comfortable seating for 6-7  
Storage under seating  
Handcrafted cockpit table in finest wood  
Full cockpit service area with refrigerator and sink  
Hot and cold water  
Glass holders  
Overhead LED lights  
Dimmer for overhead LED lights  
Main switch and circuit breaker panel  
FUSION 750 radio with Bluetooth  
230V socket for wet bar  
Electrically adjustable Cockpit table  
Canopy in canvas fabric

Aft Lounge Area

Manually operated engine room hatch  
Open aft deck with entrance to bathing platform

Helmsman's Position

Helm position bridge with individual pilot and co-pilot chairs/bench 1+3  
Nextel antiglare surface on dashboard  
Heavy duty windscreen wipers x2  
Single electronic lever engine controls  
Full analogue engine instrumentation  
Switch panel for all service functions  
Fresh water and fuel gauges  
Chart area  
Compass  
12 V plug and socket  
Hand-held fire extinguishers (2kg)  
Glass holders  
Windscreen washer  
Demisting / Defroster system  
Chartplotter Raymarine eS127  
VHF Ray 260  
FUSION 750 radio with Bluetooth  
Steering wheel Medelana  
Electronic steering

Main Saloon

Interior woodwork in finest wood  
Oak floor  
Overhead cupboards  
Overhead LED lights  
Dimmer for overhead LED lights  
Access to midships heads and shower room  
TV with DVD/Tuner in saloon or in forward stateroom  
Blinds

Galley

Galley top in high-grade composite material  
Sink with hot & cold water  
Gas cooktop with oven  
Extractor fan over hob  
Electric refrigerator (85 litres)  
Cupboard and drawers for storage  
Separate storage compartments underneath galley floor  
Rubbish bin  
2x 230V socket, 12V socket  
Oak floor  
Blinds

Electrical Equipment

Electrical system 12 volt  
5x Engine/Domestic AGM batteries  
Holding tank w/ electric pump  
Fire Suppression System in engine room

Forward Stateroom

Double berth with high-quality sprung mattress  
Skillfully crafted woodwork  
Full hanging wardrobe  
Lights in wardrobe  
Overhead lockers  
Lockers for personal items  
Oak floor  
Reading lights (2)  
Overhead LED lights  
Dimmer for overhead LED lights  
Opening portholes with mosquito screens (2)  
Drawers for storage  
230V / 12V socket  
Direct access to forward heads and shower room  
Curtains  
Deck hatch with mosquito screen and night screen  
TV with DVD/Tuner in saloon or in forward stateroom

Forward Stateroom En-Suite Shower & Heads

Counter top in high-grade composite material  
Wash basin with hot and cold water  
Electric toilet  
Separate shower  
Teak grating on shower floor  
Glass holder  
Towel hooks  
Bathroom furniture in finest wood  
Overhead lockers  
Teak flooring  
Mirror  
Overhead LED lights  
Dimmer for overhead LED lights  
Opening porthole with mosquito screen  
Extractor fan  
230V socket for shaver or hair dryer  
Blinds

Starboard Centre Guest Cabin

2x Single berths with high-quality sprung mattresses  
Skillfully crafted interior woodwork  
Oak floor  
Reading lights (2)  
Hanging wardrobe  
Lights in wardrobe  
Overhead LED lights  
Dimmer for overhead LED lights  
Opening porthole with mosquito screen  
Blinds  
230V / 12V socket

Port Centre Guest Cabin

Double berths with high-quality sprung mattresses  
Skillfully crafted interior woodwork  
Hanging wardrobe  
Lights in wardrobe  
Oak floor  
Reading lights x2  
Overhead LED lights  
Dimmer for overhead LED lights  
Blinds  
Opening porthole with mosquito screen  
230V / 12V socket

Center Shower & Heads

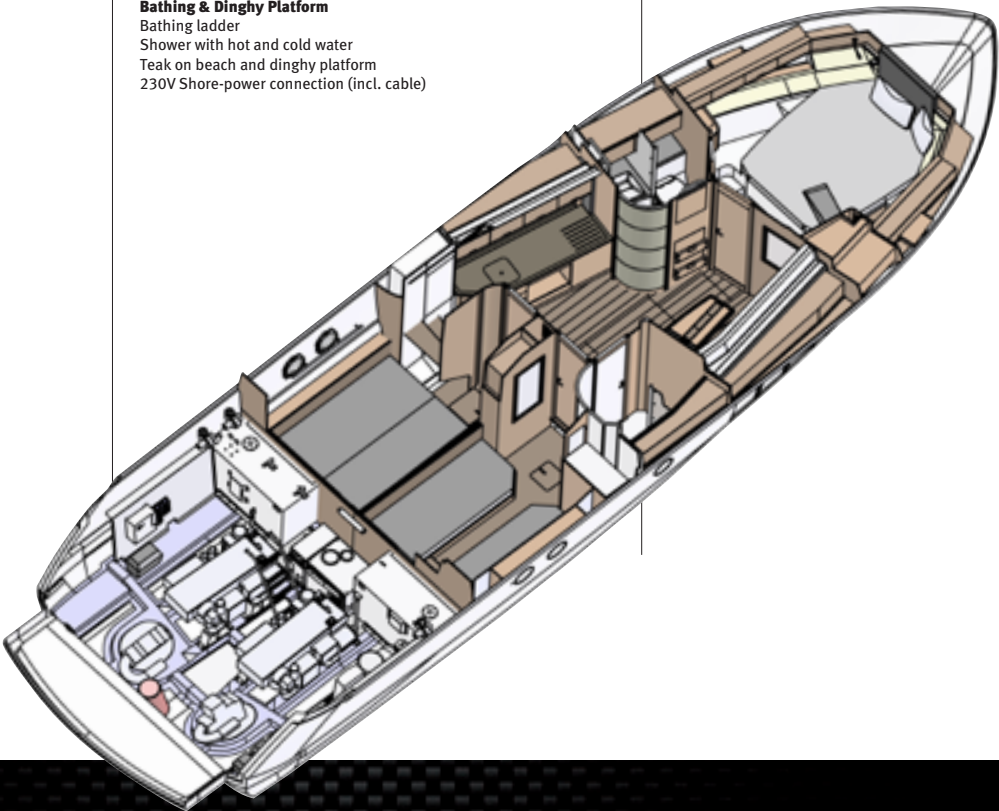
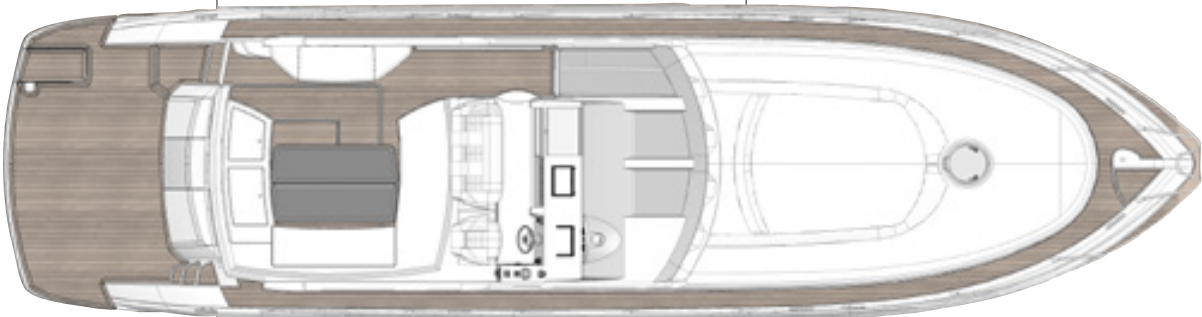
Counter top in high-grade composite material  
Wash basin with hot and cold water taps and accessories  
Electric heads  
Separate shower  
Teak grating on shower floor  
Glass holder  
Towel hooks  
Skillfully crafted interior woodwork  
Overhead lockers  
Teak floor  
Opening porthole with mosquito screen  
Mirrored cupboard  
Overhead LED lights  
Dimmer for overhead LED lights  
Extractor fan  
230V socket for shaver or hair dryer  
Blinds

Bathing & Dinghy Platform

Bathing ladder  
Shower with hot and cold water  
Teak on beach and dinghy platform  
230V Shore-power connection (incl. cable)

Overall dimentions

Length over all	14,15 m (excl. Pulpit)
Beam	3,98 m
Height	4,75 m
Weight	10 700 kg (incl. std Engine)
Fuel	1070 L
Fresh water	300 L
Berths	6 persons
CE Classification	B
Exterior design and styling	WINDY
Interior design	WINDY
Naval Architect	Hans Jorgen Johnsen



# Specifications





Windy Scandinavia AB pursues a policy of continuous product innovation and enhancement. Everything presented in this brochure is subject to change without prior notice. This brochure must therefore be taken only as non-binding guidelines from Windy Scandinavia AB • The images shown in this brochure do not necessarily show standard boats and cannot therefore be used as references for the standard specification for each individual model • All boats manufactured by Windy Scandinavia AB are approved for specific categories by RINA and are CE-labelled • Every attempt is made to ensure that all information in this brochure is as accurate as possible, but it is important to note that a boat's performance and test data are given only as guidance • Cleanliness of hull, condition of stern gear, engine type and set-up, air and water temperatures, the weight of fuel, water, stowage and the number of persons on board may all affect the boats' performance and test data. For these and other reasons, Windy Scandinavia AB is unable to provide any guarantee of test data and boat performance • This brochure was produced by Alias JP AS, Arendal, autumn 2015 • Windy Scandinavia AB reserves all rights in this brochure. Reproduction prohibited without written authorization by the copyright holder • Windy Oceancraft, Draco Oceancraft, Draco and WinTec are trademarks of Windy Boats AS and Draco Boats AS.





WINDY BOATS A.S. · SKARPNES · BOX 40 · N-4854 NEDENES · NORWAY  
[www.windyboats.com](http://www.windyboats.com) · [sales@windy.no](mailto:sales@windy.no)

WINDY SCANDINAVIA AB · SÖDRA VARVSGT. 27 · SE-593 50 VÄSTERVIK · SWEDEN · TEL.: +46 490 258 850  
[www.windyboats.com](http://www.windyboats.com) · [contact@windyscandinavia.se](mailto:contact@windyscandinavia.se)

